



ELECTRO-MECHANICS

*Windows Driver
Auto-Installer*

For

Samsung Mini Printer



Contents



I . Install Guide

II . Special Functions

III. Q&A

3inch Receipt Printer

SRP-350, SRP-270

2inch Receipt Printer

STP-131, OM7212, STP-102, STP-103, STP-104

Label Printer

SRP-770

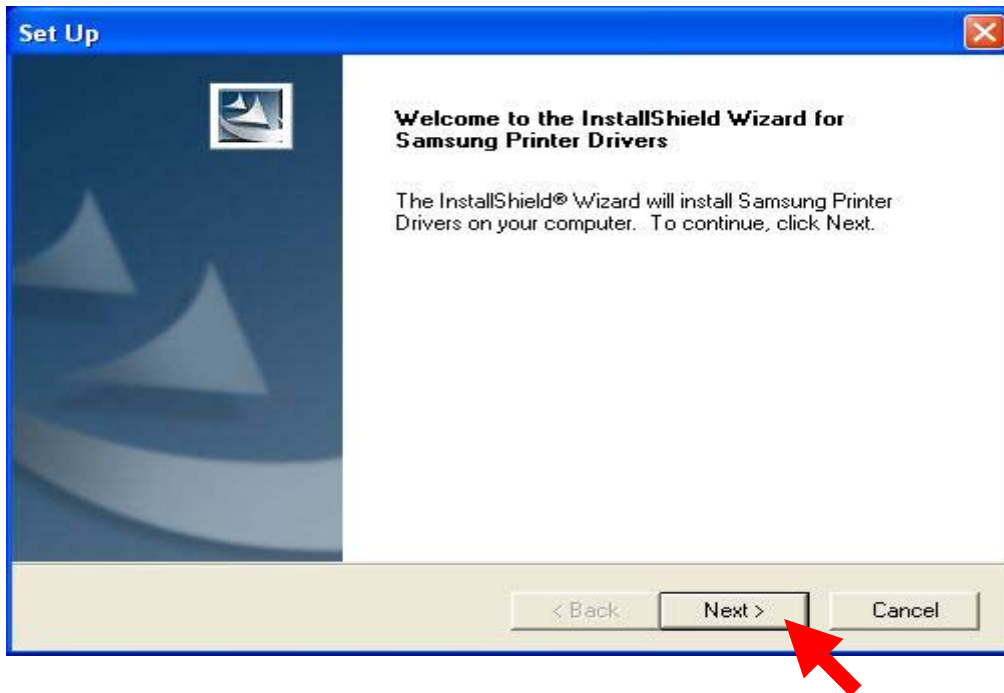
Operating System

Windows 95/98, Windows Me, Windows NT, Windows 2000, Windows XP

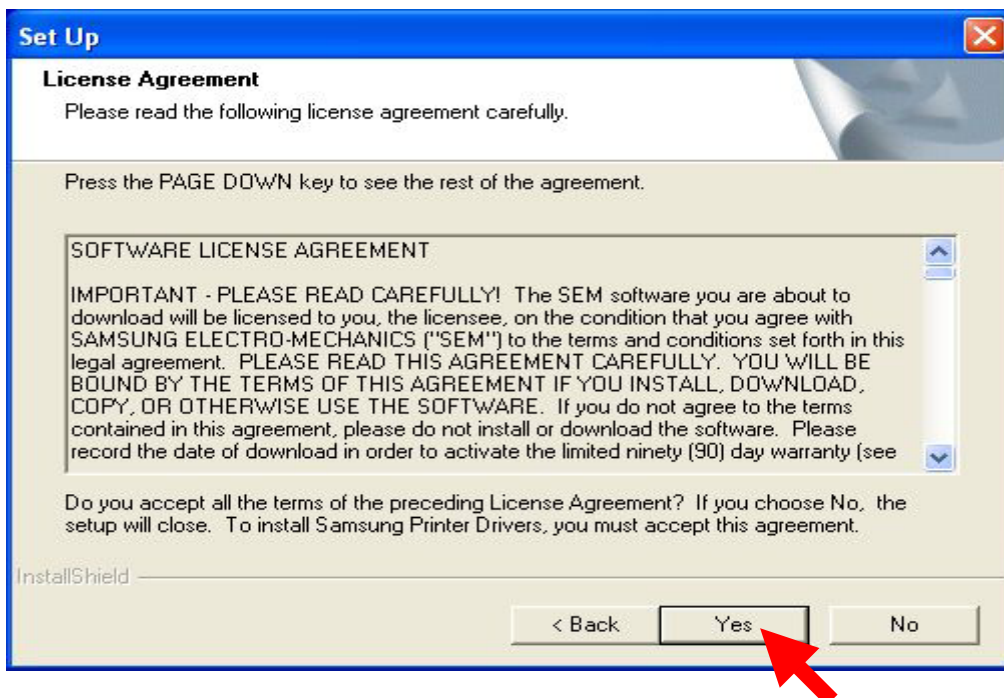
I. INSTALL GUIDE

1. Install

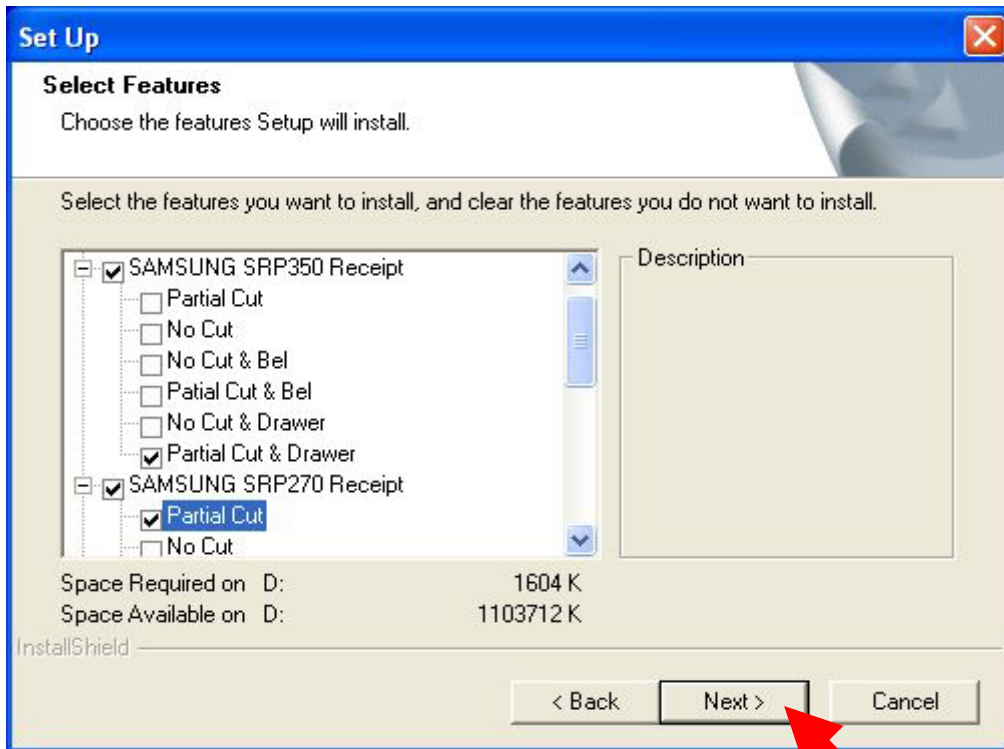
1) Double-click semprndrv_Vxxxxx.exe to start setup and click **Next >** button.



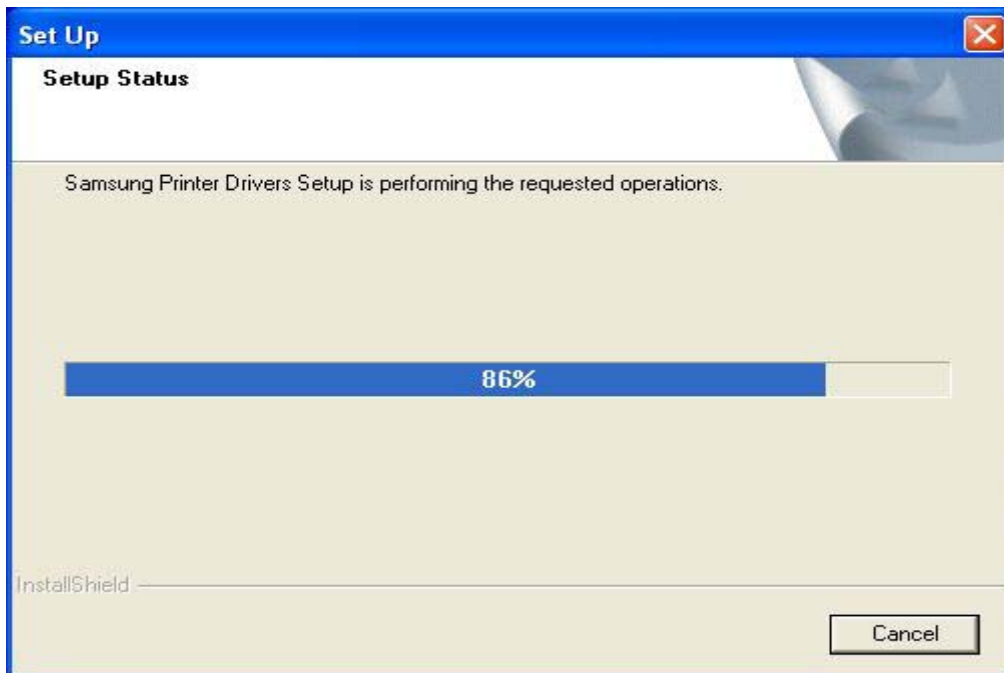
2) If you agree, click **Yes** button



3) Select Driver Models you want to install and click **Next >** button. If you want to use USB interface, please select USB Port Monitor in bottom of Model selection window.



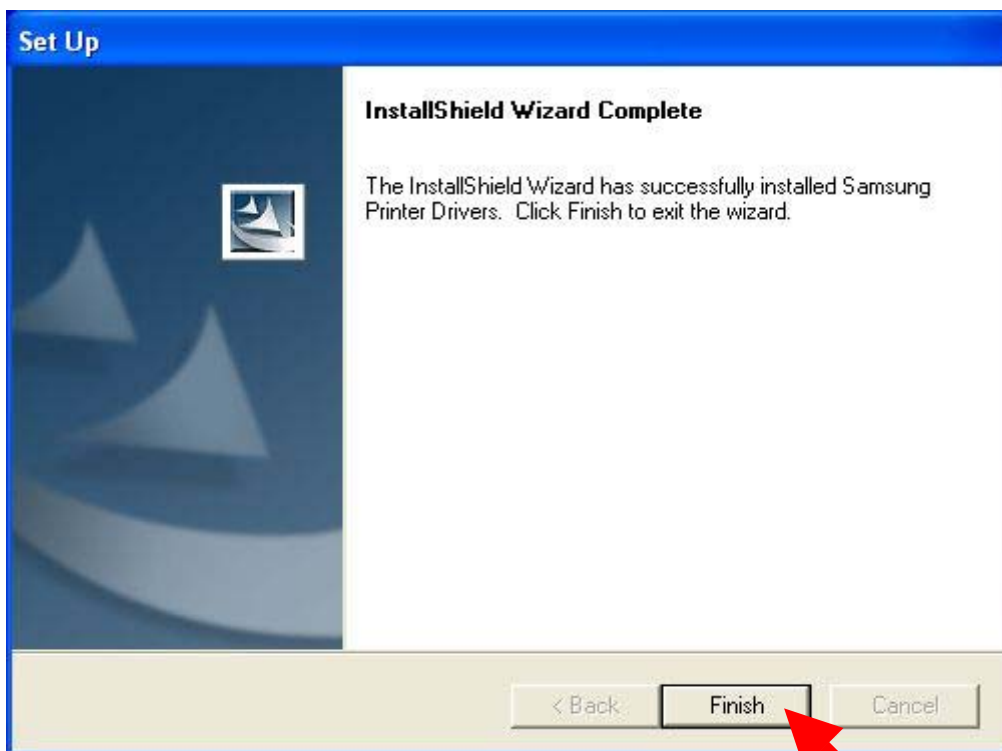
4) Please Wait until the selected drivers will be installed.



5) If you meet the following message during installation just click **Continue Anyway** button.



6) If all drivers are correctly installed, you can see following message. Click the **Finish** Button to exit the auto-installer.



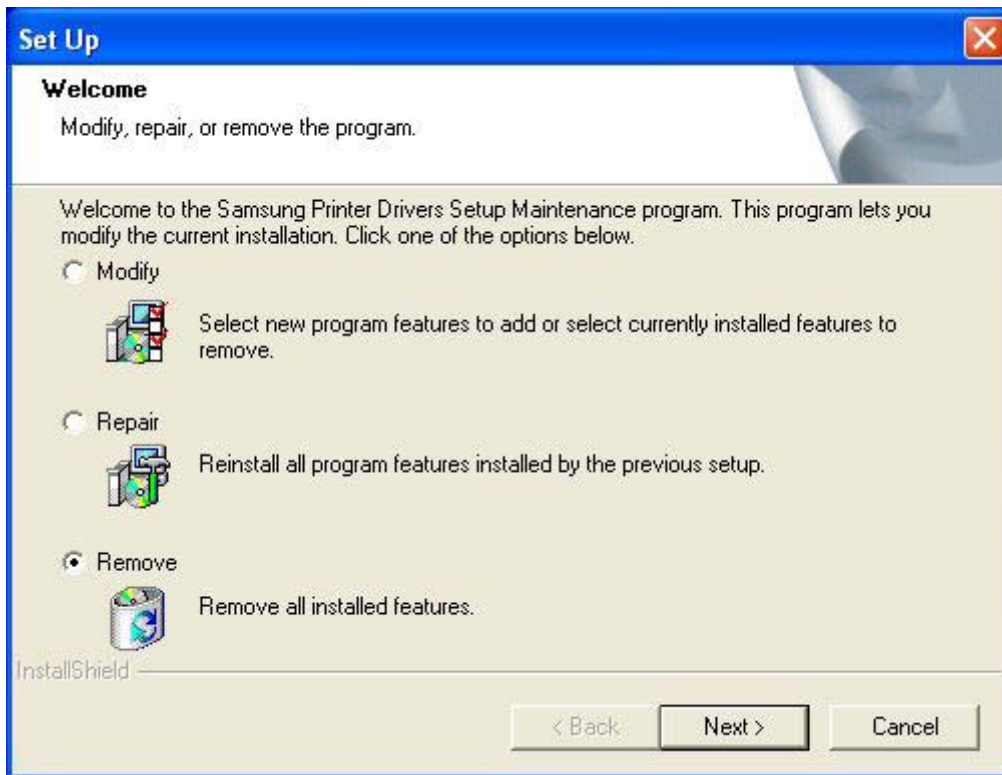
2. Modify & Remove

This Auto-installer provides 3 kinds of setup options. If you execute auto-installer when some drivers are already installed, you can see following message box.

- Modify : Select new drivers to add or select currently installed drives to remove
- Repair : Reinstall all drivers installed by the previous setup
- Remove : Remove all installed drivers

If you want to install some other drivers or remove some drivers, please select 'Modify'.

If you delete all installed drivers, select 'Remove' and Next > button.



II. Special Functions

Receipt printer drivers (except Label printer) support to execute special non-printing functions like paper-cutting or open-drawer. You can execute these functions by select font type as 'CONTROL_SAMSUNG' and sending appropriate character code to the driver. Then printer acts special functions instead of printing that character code. Please refer the following table.

Control Code	Function	Reference
A	Open Drawer 1	50ms pulse width
B	Open Drawer 1	100ms pulse width
C	Open Drawer 1	150ms pulse width
D	Open Drawer 1	200ms pulse width
E	Open Drawer 1	250ms pulse width
a	Open Drawer 2	50ms pulse width
b	Open Drawer 2	100ms pulse width
c	Open Drawer 2	150ms pulse width
d	Open Drawer 2	200ms pulse width
e	Open Drawer 2	250ms pulse width
5	HT	0x09
6	LF	0x0a
7	CR	0x0d
p	Not include HRI with barcode	
q	Print HRI above barcode	Font A
r	Print HRI below barcode	Font A
s	Print HRI above barcode	Font B
t	Print HRI below barcode	Font B
f	Paper Cut	
F	Paper Cut	
P	Paper Cut	

III. Q & A

Q) How can I open cash drawer with windows drivers?

- A) You can control cash drawer by either using control font or installing drawer version driver.
- 1) Using control font : Select font type as “CONTROL_SAMSUNG” and send control code via driver to printer(refer Chapter II. Special Functions)
 - 2) Installing drawer version driver : During installation, select drawer version driver(ex. SRP350 Partial cut & Drawer) then the printer automatically will send cash drawer command after printing job.

Q) My PC does not recognize USB connection after installing USB port monitor.

- A) After deleting ‘USB print support’ (or other name marked by an exclamation mark) under Universal Serial Bus Controller in Device Manager, please reinstall the USB port monitor. During installing USB port monitor, I recommend to turn off printer power.

You can open Device Manager window with following procedure.

- 1) Windows 9x/Me/2000
Right-click on My Computer on Desktop and select Properties.
“Hardware – Device Manager – Universal Serial Bus Controller – USB print support”
- 2) Windows XP
“Start – My Computer – View System Information – Hardware – Device Manager – Universal Serial Bus Controller – USB print support”



ELECTRO-MECHANICS

*Copyright to Samsung Mini Printer
2002.11.05 (Ver1.0)*